



ULTRATON

Foshan Ultraton Engineering Machinery Co., Ltd

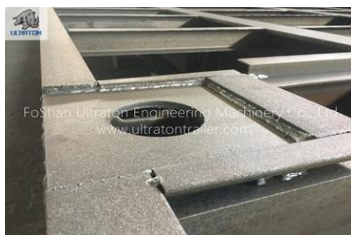
2 Axles 35T Flatbed Container Transport Semi Truck Trailer



As a flexible model, Ultraton's 2 axles 35T Flatbed Semi-Trailer is also very workable for the standard size of the container can meet your different need on container transport. It can be modified according to customer's requirement.

Overview of 2 Axles 35T Flatbed Container Transport Semi Truck Trailer

- Scientific design with advanced computer-aided design software, finite element analysis of the frame according to vehicle load quality requirements
- Flange and web width & thickness could be customized
- Steel material we use is high strength low alloy steel Q345.
- Welded by automatic submerged-arc process. Complete chassis shot blasting to clean rust and remove welding stress
- Different thickness of diamond pattern floor plate is optional
- Axles could be optional for German type or American type
- Suspension is optional for mechanical suspension, air suspension



Advantage of 2 Axles 35T Flatbed Container Transport Semi Truck Trailer

1. Mature technology, could be produced in large quantity at competitive cost

www.ultrontrailer.com

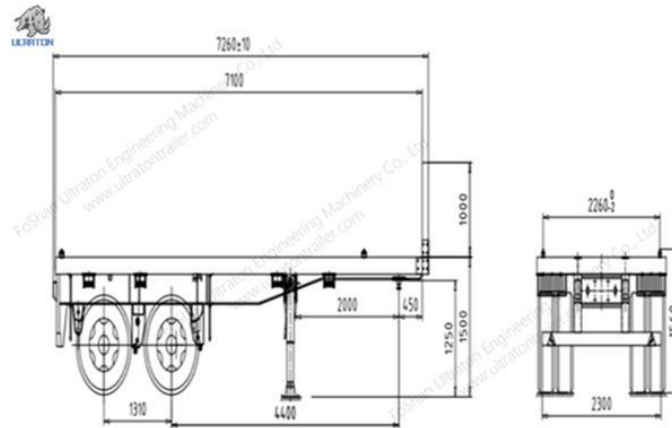
inquiry@ultrontrailer.com



ULTRATON

Foshan Ultraton Engineering Machinery Co., Ltd

2. Lighter weight with high strength to transport container
3. Shipped both by container, or RORO, bulk shipment.
4. Nice and attractive appearance with our good workmanship
5. Fast response and flexible service from our professional team
6. Distinct location to get full range support on delivery and manufacturing
7. The long term tenet of Ultraton as one of the standout [semi trailer manufacturers](http://www.ultratontrailer.com) to be your reliable partner bringing you Greater value makes you worry free on after sales service



Technical Parameter	2 Axles 35T Flatbed Container Transport Semi Truck Trailer
Tare Weight(KG)	4200KG
Loading Capacity(KG)	40000KG
Dimension(mm)	9000*2500*1500
Main Beam	The height of the beam is 500 mm, upper Flange is 14mm, Lower Flange is 14mm, Web is 8mm.
Kingpin	2" / 3.5" ,Welded/Bolt-In
Landing Gear	Standard 28Ton , FUWA Brand
Axle	Standard FUWA Brand / ULTRATON Brand Optional : BPW Brand or HuaJing Brand
Suspension	Mechanical Suspension/Air Suspension, Standard FUWA Brand/ULTRATON Brand Optional : BPW Brand or HuaJing Brand
Leaf Spring	Standard FUWA Brand/ULTRATON Brand 90mm*16*7 or 90*16*8
Brake system	Dual Air Brake (Drum) System, With Inter-Locking Device.WABCO Relay
Electrical System	Emergency Valve, OPTIONS: ABS. 24 Volt LED Electrical System In Accordance To The Standard, With 7-Core Adaptor For Tractor.
Tire	12.00R22.5 Tubeless, 8 Units
Rim	9.0*22.5, 8 Units
Shot Blasting & Painting	Shot Blasting and Sanding Treatment . Two Coat Of Anti Corrosion Primer and Two Coat Of Finish Painting
Mud Guard	Fabricated Mud Guard 4 nos



ULTRATON

Foshan Ultraton Engineering Machinery Co., Ltd

Tool Box	1 Standard (The Tool Box Size Can Be Tailored To Suit Your Needs)
Container Locks	4/8/12 Screw type
Spare Tire Carrier	Equipped one sets per chassis without spare tire.
Front Baffle	According To Customer's Requirement
We Can Build The Trailer According To Customer's Design And Requirement.	

Application of 2 Axles 35T Flatbed Container Transport Semi Truck Trailer

Ultraton's [2 axles 35T Flatbed Semi Trailer](#) could be used as a basic model to transport standard size of container in ports or from site to site on road. Suitable for logistic company, terminal ports, shipping lines, forwarders, truck manufacturer

