



ULTRATON

Foshan Ultraton Engineering Machinery Co., Ltd

2 Axles 40ft Skeletal Container Transport Semi Truck Trailer



As an upgraded model, it is commonly used and basic design to transport a 40ft container. Extendable Chassis and Multipurpose Container Trailer can be modified according to the customer's requirement.

Overview of 2 Axles 40ft Skeletal Container Transport Semi Truck Trailer

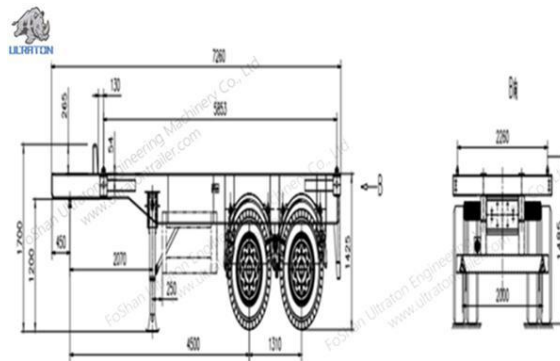
Ultraton has 40 foot container trailer for sale.

- 16 manganese high strength steel is used in heavy-duty and extra durability designed for the main I beam.
- Flange and web width & thickness could be customized
- Optimized design with advanced computer-aided design software, finite element analysis of the frame according to vehicle load quality requirements
- Specific auto hydraulic I beam straightening machine for more accuracy
- Welded by automatic submerged-arc process and skilled technicians. Complete chassis shot blasting to clean rust and remove welding stress
- Axles could be optional for German type or American type
- The suspension is optional for mechanical suspension, air suspension
- Other core components are of superior quality and famous brands. Details are outlined below.



**Advantage of 2 Axles 40ft Skeletal Container Transport Semi Truck Trailer**

1. Mature technology, could be produced in large quantity at competitive cost
2. Lighter weight with high strength to transport container
3. Packing solution in CKD/ SKD/CBU is optional according to different project
4. Advanced manufacturing equipment and workmanship to ensure outstanding performance
5. Complete and flexible service from our professional team
6. Distinct location to get full range support on delivery and manufacturing
7. The long term tenet of Ultraton as one of the standout [semi trailer manufacturers](http://www.ultratontrailer.com) to be your reliable partner bringing you Greater value makes you worry free on after sales service



Technical Parameter	2 Axles 40ft Skeleton Container Transport Semi Truck Trailer
Tare Weight(KG)	3800KG
Loading Capacity(KG)	40000KG
Dimension(mm)	12400*2480*1500
Main Beam	The height of the beam is 500 mm, upper Flange is 14mm, Lower Flange is 14mm, Web is 8mm.
Kingpin	2"/ 3.5", Welded/Bolt-In
Landing Gear	Standard 28Ton , FUWA Brand
Axle	Standard FUWA Brand / ULTRATON Brand Optional : BPW Brand or HuaJing Brand
Suspension	Mechanical Suspension/Air Suspension, Standard FUWA Brand/ULTRATON Brand Optional : BPW Brand or HuaJing Brand
Leaf Spring	Standard FUWA Brand/ULTRATON Brand 90mm*16*7 or 90*16*8
Brake system	Dual Air Brake (Drum) System, With Inter-Locking Device.WABCO Relay Emergency Valve, OPTIONS: ABS.
Electrical System	24 Volt LED Electrical System In Accordance To The Standard, With 7-Core Adaptor For Tractor.
Tire	12.00R22.5 Tubeless, 8 Units
Rim	9.0*22.5, 8 Units
Shot Blasting & Painting	Shot Blasting and Sanding Treatment . Two Coat Of Anti Corrosion Primer and



ULTRATON

Foshan Ultraton Engineering Machinery Co., Ltd

	Two Coat Of Finish Painting
Mud Guard	Fabricated Mud Guard 4 nos
Tool Box	1 Standard (The Tool Box Size Can Be Tailored To Suit Your Needs)
Container Locks	4/8/12 Screw type
Spare Tire Carrier	Equipped one sets per chassis without spare tire.
We Can Build The Trailer According To Customer's Design And Requirement.	

Application of 2 Axles 40ft Skeletal Container Transport Semi Truck Trailer

Ultraton's [40 foot semi trailer](#) could be used to transport standard size of container in ports or from site to site on road. Suitable for logistic company, terminal ports, shipping lines, forwarders, truck manufacturer

