



ULTRATON

Foshan Ultraton Engineering Machinery Co., Ltd

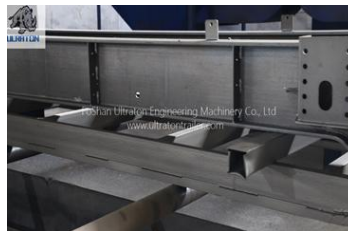
20-40 Ton Low Bed Semi Trailer



Ultraton's 25-40T Low Bed Semi Trailer with a concave beam-type frame is a durable and smart solution for different kinds of heavy-duty load.

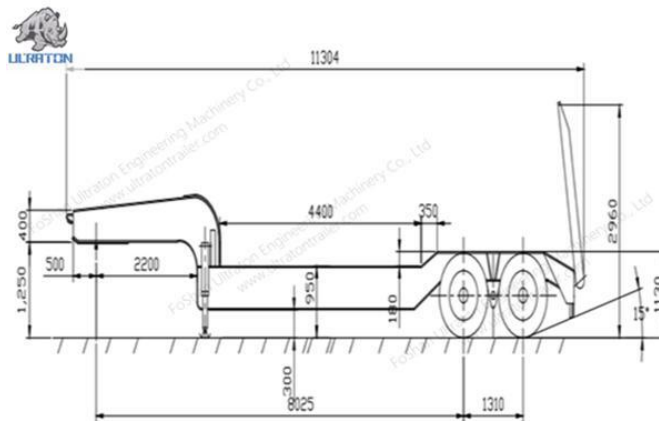
Overview of 20-40 Ton Low Bed Semi Trailer

- Scientific design with advanced computer-aided design software, finite element analysis of the frame according to vehicle load quality requirements
- Steel material we use is high strength low alloy steel Q345.
- Heavy duty and extra durability designed for concave beam.
- Flange and web width & thickness could be customized
- Welded by automatic submerged-arc process and skilled technicians. Complete chassis shot blasting to clean rust.
- Superior quality and famous brand we use on specific different trailer parts. Details are outlined as below.



**Advantage of 20-40 Ton Low Bed Semi Trailer**

1. High tensile structure steel, robust and durable construction with high bending moment, high concentrated loading bearing capacity.
2. Practical design to ensure reasonable load sharing to transport specific goods
3. Shipped both by container, or RORO, bulk shipment.
4. Advanced manufacturing equipment and mature workmanship to ensure outstanding performance
5. Complete and flexible service from our professional team
6. Distinct location to get full range support on delivery and manufacturing
7. The long term tenet of Ultraton as one of the standout [semi trailer manufacturers](http://www.ultrontrailer.com) to be your reliable partner bringing you Greater value makes you worry free on after sales service



Technical Parameter	25 -40 Ton Low Bed Semi Trailer
Tare Weight(KG)	8500KG
Loading Capacity(KG)	25000KG~40000KG
Dimension(mm)	11000*3000*3000
Main Beam	The height of the beam is 500 mm, upper Flange is 14mm, Lower Flange is 14mm, Web is 8mm.
Kingpin	2" / 3.5" ,Welded/Bolt-In
Landing Gear	Standard 28Ton, FUWA Brand
Axle	Standard FUWA Brand / ULTRATON Brand Optional: BPW Brand or Huajing Brand
Suspension	Mechanical Suspension/Air Suspension, Standard FUWA Brand/ULTRATON Brand Optional: BPW Brand or Huajing Brand
Leaf Spring	Standard FUWA Brand/ULTRATON Brand 90mm*16*7 or 90*16*8
Brake system	Dual Air Brake (Drum) System, With Inter-Locking Device.WABCO Relay
	Emergency Valve, OPTIONS: ABS.
Electrical System	24 Volt LED Electrical System In Accordance To The Standard, With



ULTRON

Foshan Ultraton Engineering Machinery Co., Ltd

	7-Core Adaptor For Tractor.
Tire	12.00R22.5 Tubeless,8 Units
Rim	9.0*22.5,8 Units
Shot Blasting & Painting	Shot Blasting and Sanding Treatment. Two Coat Of Anti Corrosion Primer and Two Coat Of Finish Painting
Mud Guard	Fabricated Mud Guard 4 nos
Tool Box	1 Standard (The Tool Box Size Can Be Tailored To Suit Your Needs)
Spare Tire Carrier	Equipped one sets per chassis without spare tire.
We Can Build The Trailer According To Customer's Design And Requirement.	

Application of 20-40 Ton Low Bed Semi Trailer

Ultraton's [20-40T Low Bed Semi Trailer](#) could be used to handle heavy duty load, or normal dry cargo in different need for logistic companies and drivers

