



ULTRATON

Foshan Ultraton Engineering Machinery Co., Ltd

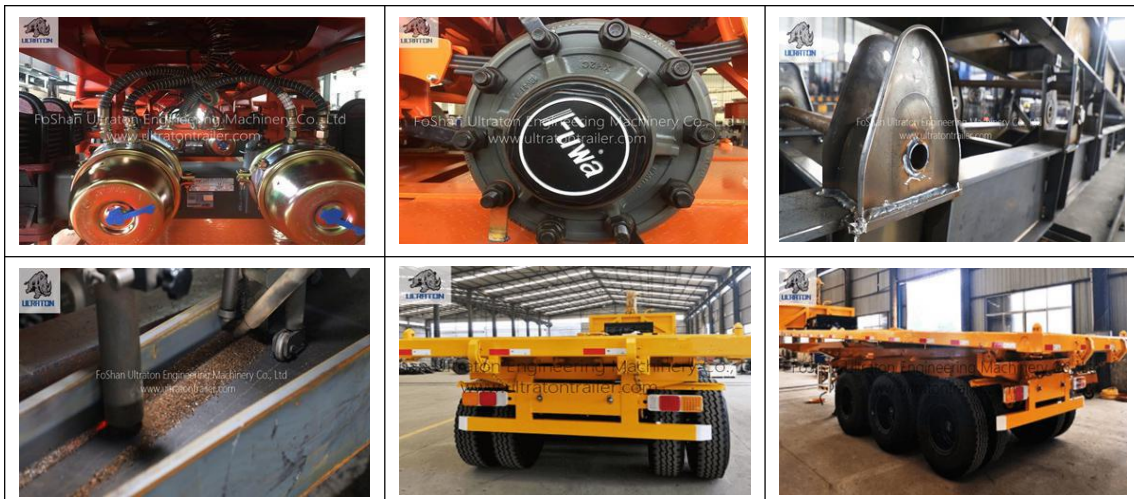
3 axles 60 Ton Semi End Dump Trailer



Ultron's 3 Axles Semi End Dump Trailer is the widely used way to transport bulky and easily-pile-up materials with hydraulic cylinder front-mounted. It can be modified according to customer's requirement.

Overview of 3 axles 60 Ton Semi End Dump Trailer

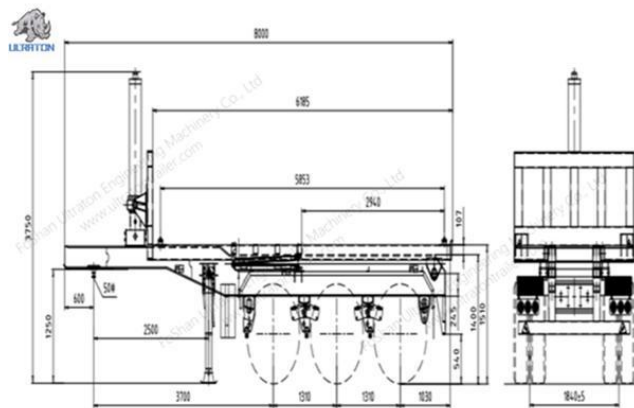
- Scientific design with advanced computer-aided design software, finite element analysis of the frame according to vehicle load quality requirements
- Flange and web width & thickness could be customized
- Steel material we use is high strength low alloy steel Q345
- Three-axle balanced design is equipped with a mass balance block between the front and rear leaf springs
- Welded by automatic submerged-arc process and skilled technicians. Complete chassis shot blasting to clean rust
- Cargo boxes can be optional for ordinary rectangle cargo boxes, U-shaped boxes, mining buckets, and separate rear door cargo boxes
- Angle steel could be added to the bottom plate to increase the rigidity and impact resistance of the cargo box
- Superior quality and famous brand we use on specific different trailer parts especially hydraulic cylinder. Details are outlined as below





Advantage of 3 axles 60 Ton Semi End Dump Trailer

1. Different shape of cargo box is optional for your different need and occasion
2. Practical design with high strength to transport heavy duty goods
3. Shipped both by container, or RORO, bulk shipment.
4. Perfect appearance with our good workmanship
5. Fast response and flexible service from our professional team
6. Distinct location to get full range support on delivery and manufacturing
7. The long term tenet of Ultraton as one of the standout [semi trailer manufacturers](http://www.ultratontrailer.com) to be your reliable partner bringing you Greater value makes you worry free on after sales service



| Technical Parameter | Semi End Dump Trailer |
|----------------------|---|
| Tare Weight(KG) | 7600KG |
| Loading Capacity(KG) | 60000KG |
| Dimension(mm) | 8000*2500*3400 |
| Main Beam | The height of the beam is 500 mm, upper Flange is 14mm, Lower Flange is 14mm, Web is 8mm. |
| Kingpin | 2"/ 3.5", Welded/Bolt-In |
| Landing Gear | Standard 28Ton , FUWA Brand |
| Axle | Standard FUWA Brand / ULTRATON Brand Optional : BPW Brand or HuaJing Brand |
| Suspension | Mechanical Suspension/Air Suspension, Standard FUWA Brand/ULTRATON Brand Optional : BPW Brand or HuaJing Brand |
| Leaf Spring | Standard FUWA Brand/ULTRATON Brand 90mm*16*7 or 90*16*8 |
| Brake system | Dual Air Brake (Drum) System, With Inter-Locking Device.WABCO Relay Emergency Valve, OPTIONS: ABS. |
| Electrical System | 24 Volt LED Electrical System In Accordance To The Standard, With 7-Core Adaptor For Tractor. |
| Tire | 12.00R22.5 Tubeless, 12 Units |



ULTRATON

Foshan Ultraton Engineering Machinery Co., Ltd

| | |
|--|---|
| Rim | 9.0*22.5,12 Units |
| Shot Blasting & Painting | Shot Blasting and Sanding Treatment . Two Coat Of Anti Corrosion Primer and Two Coat Of Finish Painting |
| Mud Guard | Fabricated Mud Guard 6 nos |
| Tool Box | 1 Standard (The Tool Box Size Can Be Tailored To Suit Your Needs) |
| Container Locks | 4 Screw type |
| Spare Tire Carrier | Equipped one sets per chassis without spare tire. |
| Front Baffle | According To Customer's Requirement |
| We Can Build The Trailer According To Customer's Design And Requirement. | |

Application of 3 axles 60 Ton Semi End Dump Trailer

Ultraton's [3 axles Semi End Dump Trailer](#) could be used to transport sand, stone, coal, soil, garbage, food and agricultural products.

