



ULTRATON

Foshan Ultraton Engineering Machinery Co., Ltd

20-40 Ton Low Bed Semi Trailer



Ultraton's 40-60 Low Bed Semi Trailer with a concave beam-type frame is a durable and smart solution for different kinds of heavy-duty load. We Ultraton hold the principle of being customer-oriented, offer low bed semi trailer for sale, including 60 ton low bed trailer.

Overview of 40-60 Ton Low Bed Semi Trailer

- 16 manganese high strength steel is used in heavy duty and extra durability designed for main I beam.
- Flange and web width & thickness could be customized
- Welded by automatic submerged-arc process and skilled technicians. Complete chassis shot blasting to clean rust and remove welding stress
- Floor in 50mm thick hard wood or checker plate steel
- Axles could be optional for German type or American type from 13T to 20T
- Suspension is optional for mechanical suspension, air suspension or bogie suspension



Advantage of 40-60 Ton Low Bed Semi Trailer

1. High tensile structure steel, robust and durable construction with high bending moment, high concentrated loading bearing capacity.

www.ultratontrailer.com

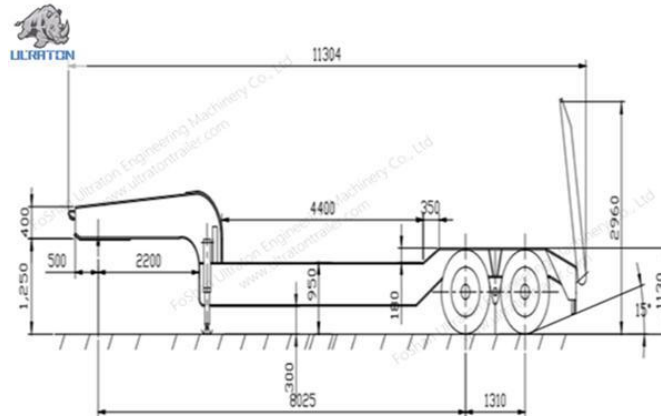
inquiry@ultratontrailer.com



ULTRATON

Foshan Ultraton Engineering Machinery Co., Ltd

2. Practical design to ensure reasonable load sharing to transport specific goods
3. Shipped both by container, or RORO, bulk shipment.
4. Advanced manufacturing equipment and mature workmanship to ensure outstanding performance
5. Complete and flexible service from our professional team
6. Distinct location to get full range support on delivery and manufacturing
7. The long term tenet of Ultraton as one of the standout [semi trailer manufacturers](http://www.ultratontrailer.com) to be your reliable partner bringing you Greater value makes you worry free on after sales service



Technical Parameter	40-60 Ton Low Bed Semi Trailer
Tare Weight(KG)	8500KG
Loading Capacity(KG)	40000KG~60000KG
Dimension(mm)	11000*3000*3000
Main Beam	The height of the beam is 500 mm, upper Flange is 14mm, Lower Flange is 14mm, Web is 8mm.
Kingpin	2" / 3.5" ,Welded/Bolt-In
Landing Gear	Standard 28Ton, FUWA Brand
Axle	Standard FUWA Brand / ULTRATON Brand Optional: BPW Brand or HuaJing Brand
Suspension	Mechanical Suspension/Air Suspension, Standard FUWA Brand/ULTRATON Brand Optional: BPW Brand or HuaJing Brand
Leaf Spring	Standard FUWA Brand/ULTRATON Brand 90mm*16*7 or 90*16*8
Brake system	Dual Air Brake (Drum) System, With Inter-Locking Device.WABCO Relay Emergency Valve, OPTIONS: ABS.
Electrical System	24 Volt LED Electrical System In Accordance To The Standard, With 7-Core Adaptor For Tractor.
Tire	12.00R22.5 Tubeless,8 Units
Rim	9.0*22.5,8 Units
Shot Blasting & Painting	Shot Blasting and Sanding Treatment. Two Coat Of Anti Corrosion Primer and Two Coat Of Finish Painting



ULTRATON

Foshan Ultraton Engineering Machinery Co., Ltd

Mud Guard	Fabricated Mud Guard 4 nos
Tool Box	1 Standard (The Tool Box Size Can Be Tailored To Suit Your Needs)
Spare Tire Carrier	Equipped one sets per chassis without spare tire.
We Can Build The Trailer According To Customer's Design And Requirement.	

Application of 20-40 Ton Low Bed Semi Trailer

Ultraton's [20-40T Low Bed Semi Trailer](#) could be used to handle heavy duty load, or normal dry cargo in different need for logistic companies and drivers

